

# Batyline



Upholstery

Marine  
collection

Collezione  
nautica



# Batyline | Marine Collection



# Batyline | Marine Collection



## Batyline Eden

**Textile look:** the textured yarn in the weave gives the fabric a soft touch and a textile aspect

**Aspetto tessile:** il filato strutturato della trama conferisce al tessuto un tocco morbido e un aspetto tessile

**Waterproof version:** a protective film on the back of the fabric ensures a long lasting waterproof solution

**Versione impermeabile:** una pellicola protettiva sul retro del tessuto garantisce una soluzione impermeabile di lunga durata



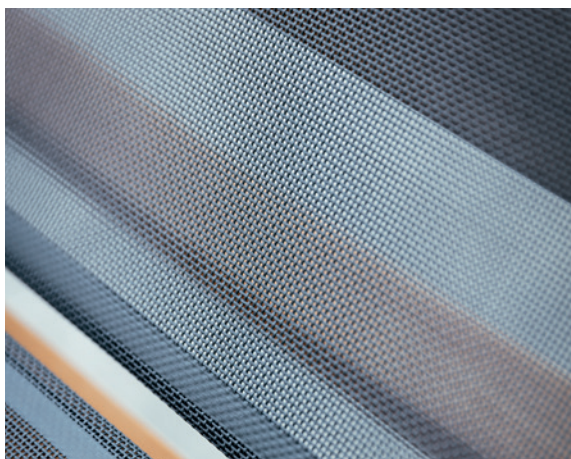
## Batyline Elios

**Softness and comfort:** the flocced yarn in the weaving ensures the softness and comfort of the fabric

**Morbidezza e comfort:** il filo floccato nella tessitura garantisce la morbidezza e il comfort del tessuto

**Robust:** the high-performance Batyline fabric with exceptional abrasion resistance properties (>50,000 Martindale cycles)

**Robusto:** il tessuto Batyline ad alte prestazioni con eccezionali proprietà di resistenza all'abrasione (>50 000 cicli Martindale)



## Batyline Iso

**Smart:** a weaving that ensures optimised placement and cutting in any direction in warp or weft

**Smart:** una tessitura che garantisce una disposizione e un taglio ottimizzati in qualsiasi direzione, sia in ordito che in trama

**Classic:** the perfect mesh for under cushion on board

**Classico:** la rete perfetta per il sottocuscino a bordo



## Batyline Lounge

**Enduring:** the elegance of a simple, classic design

**Duraturo:** l'eleganza di un design semplice e classico

**Robust:** a high-performance Batyline fabric for extreme outdoor conditions

**Robusto:** un tessuto Batyline ad alte prestazioni per condizioni esterne estreme

# Batyline | Marine Collection

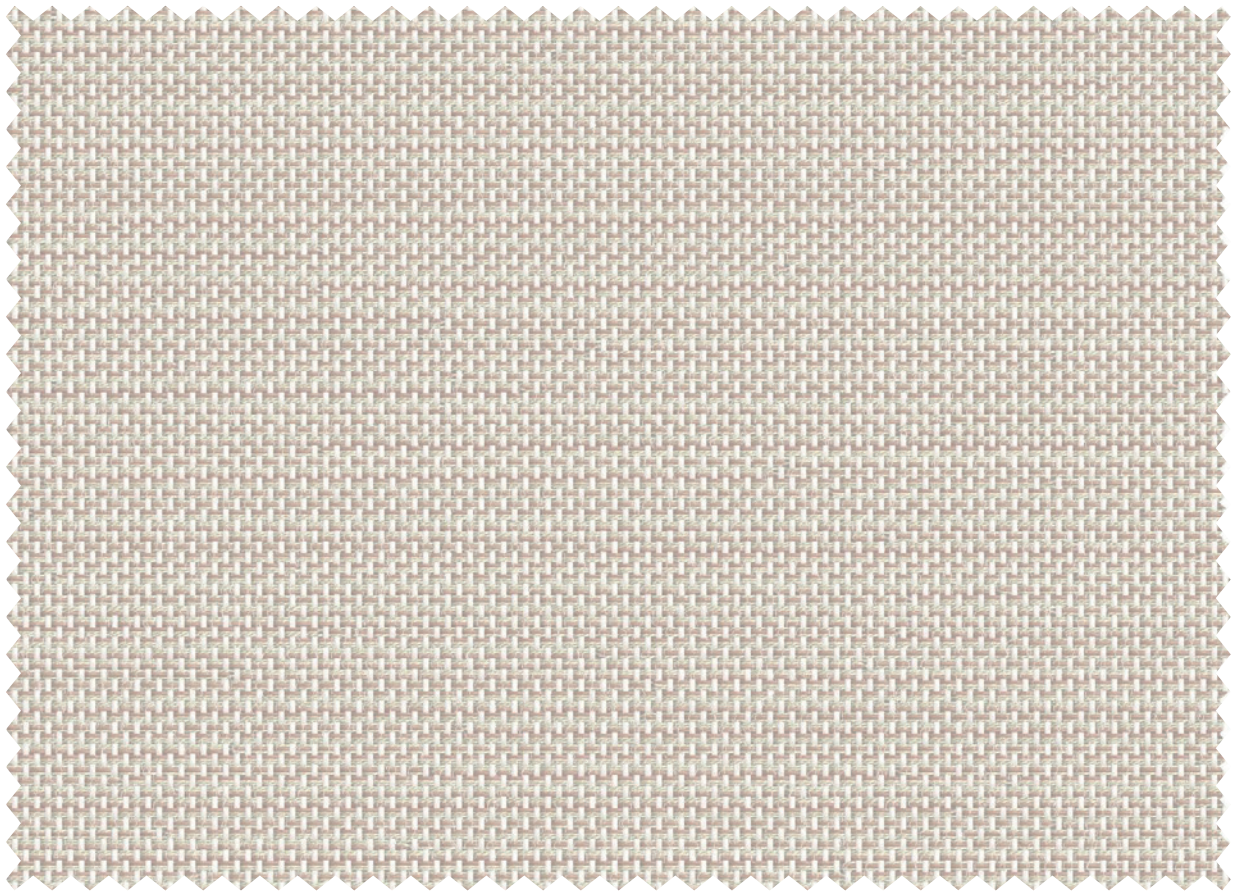
The Marine upholstery range presents the brand's high performance fabrics for yachting outdoor furniture. These fabrics have all the unique characteristics that today's boaters are increasingly looking for: a soft touch, a textile look and an excellent durability in all weather conditions.

*La gamma di rivestimenti per la nautica presenta i tessuti ad alte prestazioni del brand per gli arredi da esterno del mondo yachting. Questi tessuti hanno tutte le caratteristiche uniche che i diportisti di oggi cercano sempre di più: morbidezza al tatto, aspetto tessile ed eccellente durata in tutte le condizioni atmosferiche.*



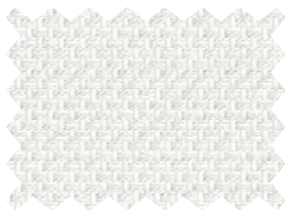
# Batylne Eden

## Eden



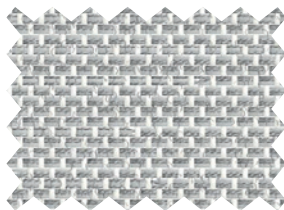
Clay  
*Argilla*

7710-51030



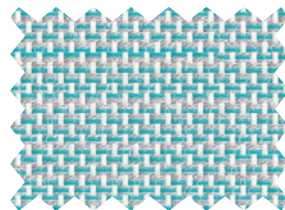
Iceberg  
*Iceberg*

7710-50718



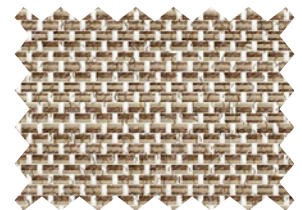
Light grey  
*Grigio chiaro*

7710-50567



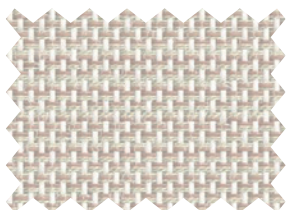
Ceramic Blue  
*Blu ceramica*

7710-51032



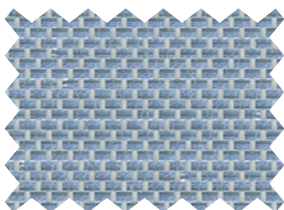
Porcelain  
*Porcellana*

7710-50719



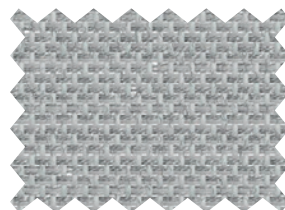
Clay  
*Argilla*

7710-51030



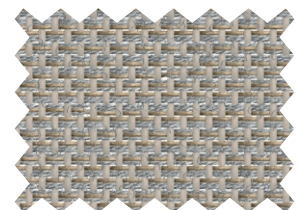
Ice cube  
*Cubetto di ghiaccio*

7710-50965



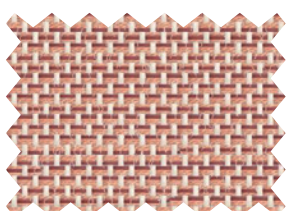
Pebble  
*Ciottolo*

7710-50566



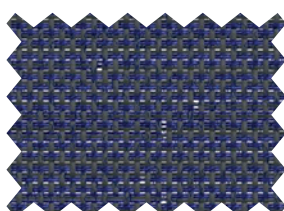
Beige grey  
*Grigio beige*

7710-50561



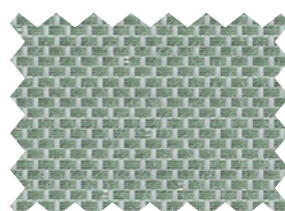
Ocre  
*Ocra*

7710-51031



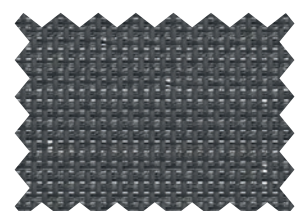
Midnight  
*Mezzanotte*

7710-50557



Stem  
*Stelo*

7710-50967



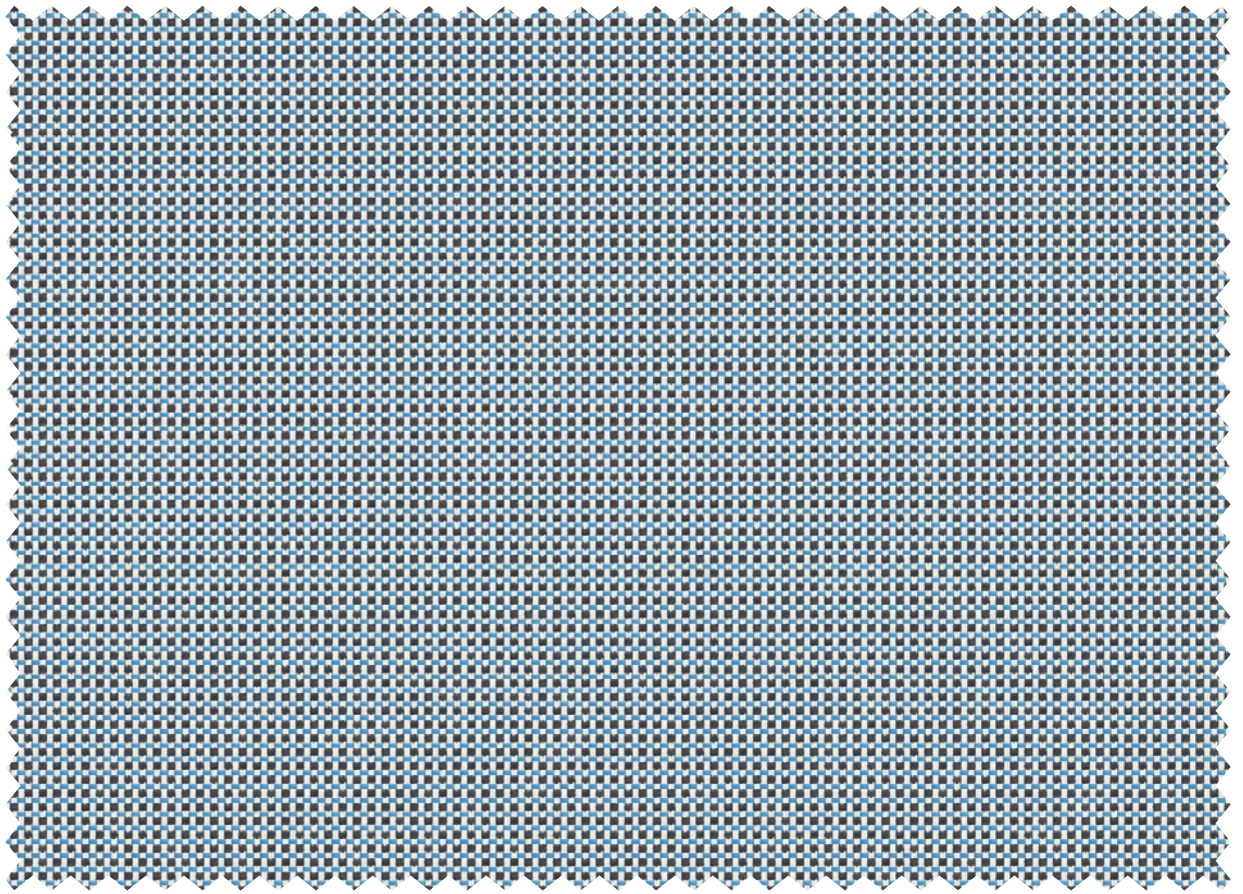
Shadow  
*Ombra*

7710-50555

More colours available on demand  
*Altri colori disponibili su richiesta*

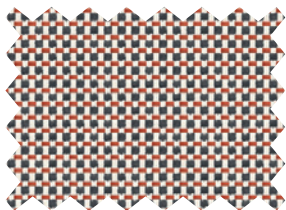
# Batyline Elios

## Elios



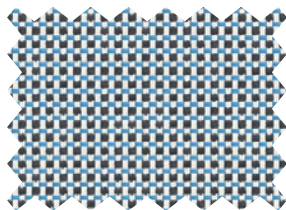
Spring  
*Primavera*

7740-51037



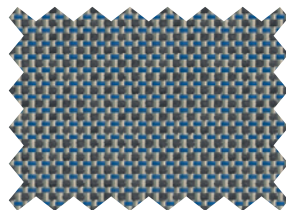
Ladybird  
*Coccinella*

7740-51036



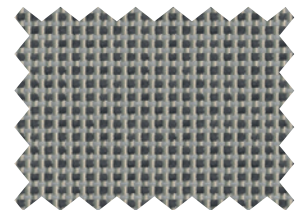
Spring  
*Primavera*

7740-51037



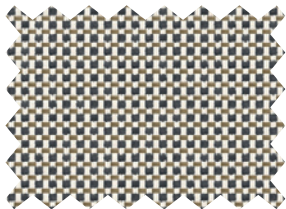
Blue Jay  
*Ghiandaia*

7740-51038



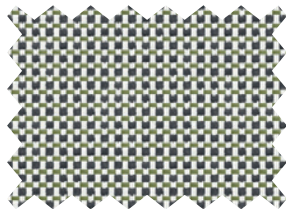
Basalt  
*Basalto*

7740-51034



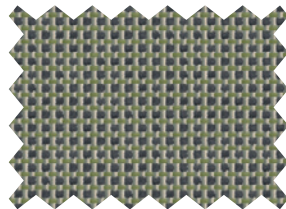
Caramel  
*Caramello*

7740-51035



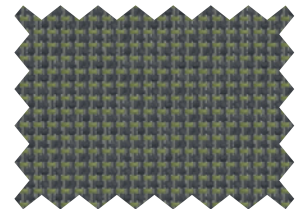
Birch  
*Betulla*

7740-51042



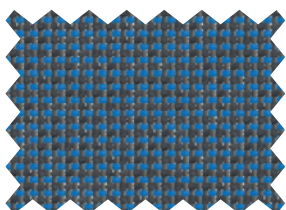
Sparrow  
*Passero*

7740-51041



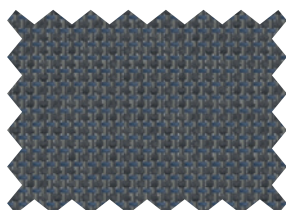
Evergreen  
*Sempreverde*

7740-51040



Sodalite  
*Sodalite*

7740-51039

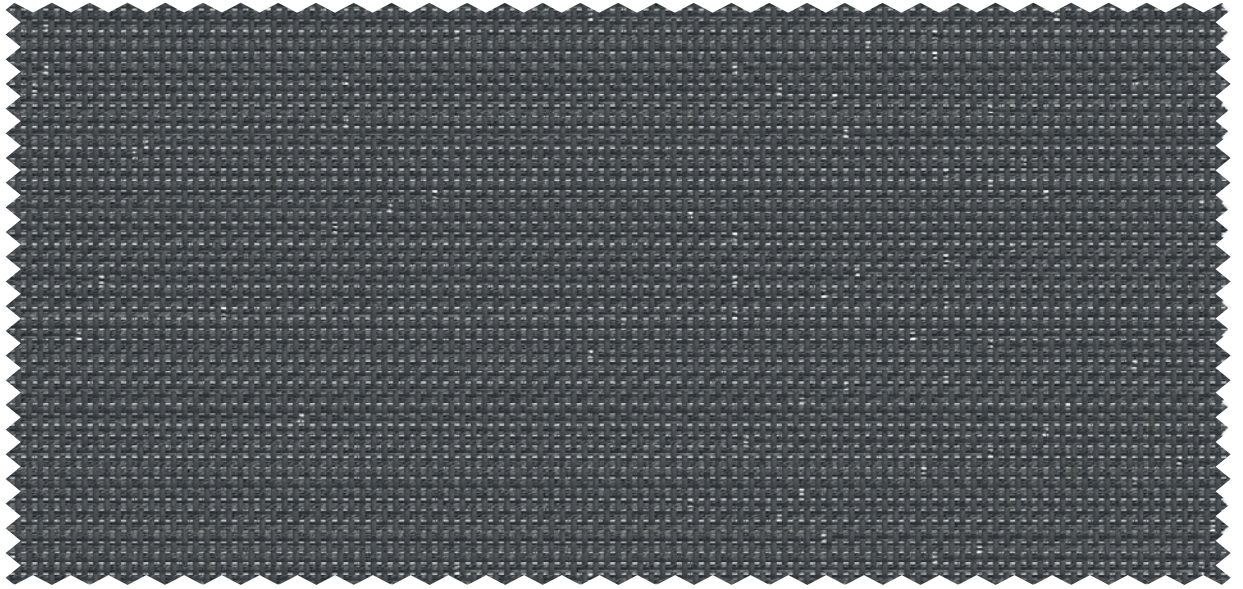


Dark night  
*Notte scura*

7740-51033

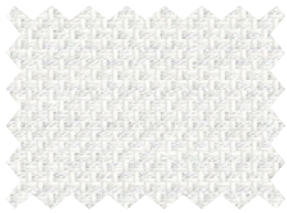
# Batyline Waterproof

Eden Waterproof - *Eden Impermeabile*



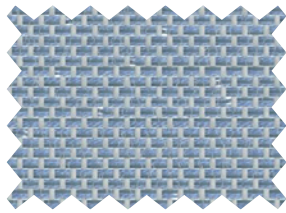
Shadow  
*Ombra*

7711WP-50555



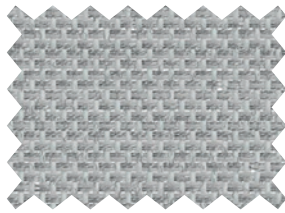
Iceberg  
*Iceberg*

7711WP-50718



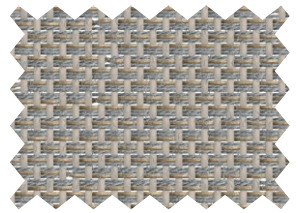
Ice cube  
*Cubetto di ghiaccio*

7711WP-50965



Pebble  
*Ciottolo*

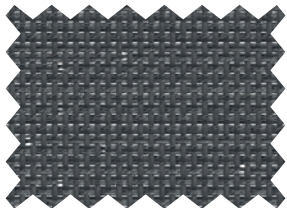
7711WP-50566



Nutmeg

*Noce moscata*

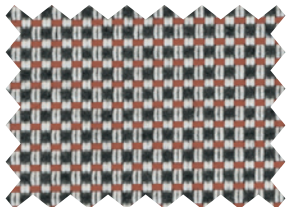
7711WP-50563



Shadow  
*Ombra*

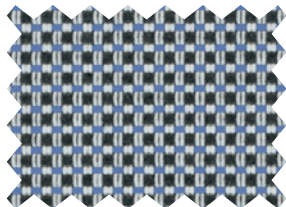
7711WP-50555

## Elios Waterproof - *Elios Impermeabile*



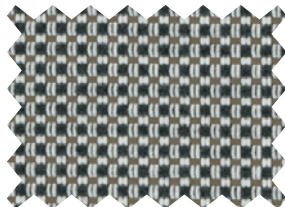
Ladybird  
*Coccinella*

7741WP-51036



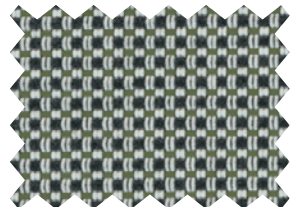
Spring  
*Primavera*

7741WP-51037



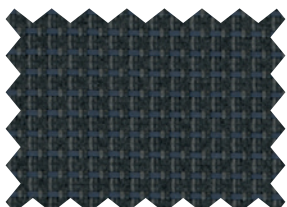
Caramel  
*Caramello*

7741WP-51035



Birch  
*Betulla*

7741WP-51042



Dark night  
*Notte scura*

7741WP-51033

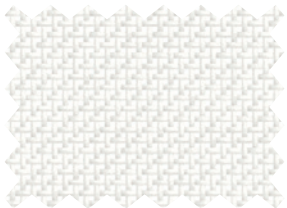
# Batyline Iso

Iso



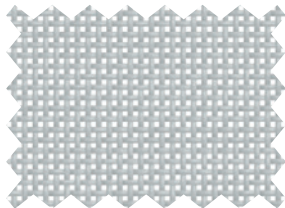
Snow  
*Neve*

7407-5001



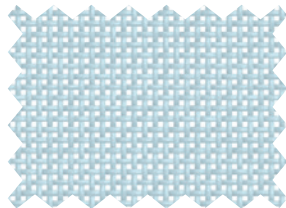
Snow  
*Neve*

7407-5001



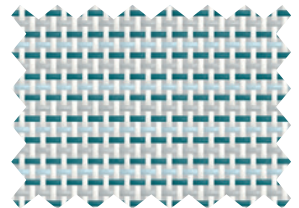
Platinum Grey  
*Grigio platino*

7407-5374



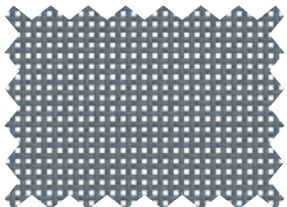
Cloud  
*Nuvola*

7407-50881



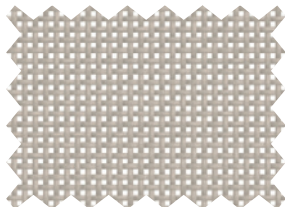
Mist  
*Nebbia*

7407-50884



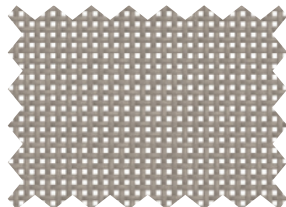
Slate  
*Ardesia*

7407-5004



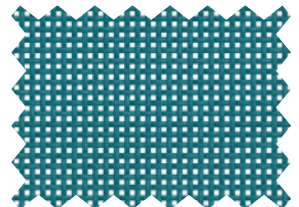
Incence  
*Incenso*

7407-5376



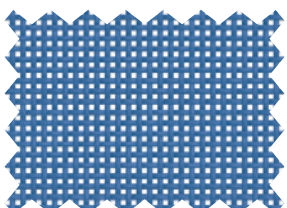
Ash  
*Cenere*

7407-5014



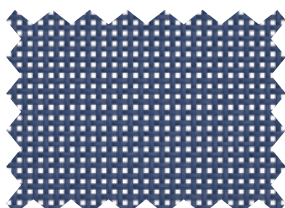
Peacock  
*Pavone*

7407-50865



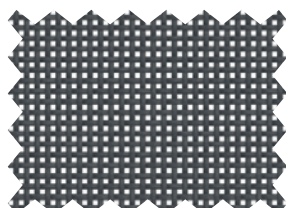
Corn Flower  
*Fiordaliso*

7407-5007



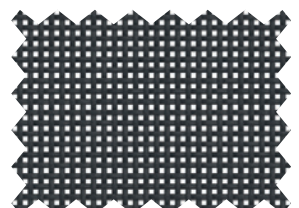
Night  
*Notte*

7407-5006



Anthracite grey  
*Grigio antracite*

7407-5700



Ebony  
*Ebano*

7407-5005

More colours available on demand  
*Altri colori disponibili su richiesta*

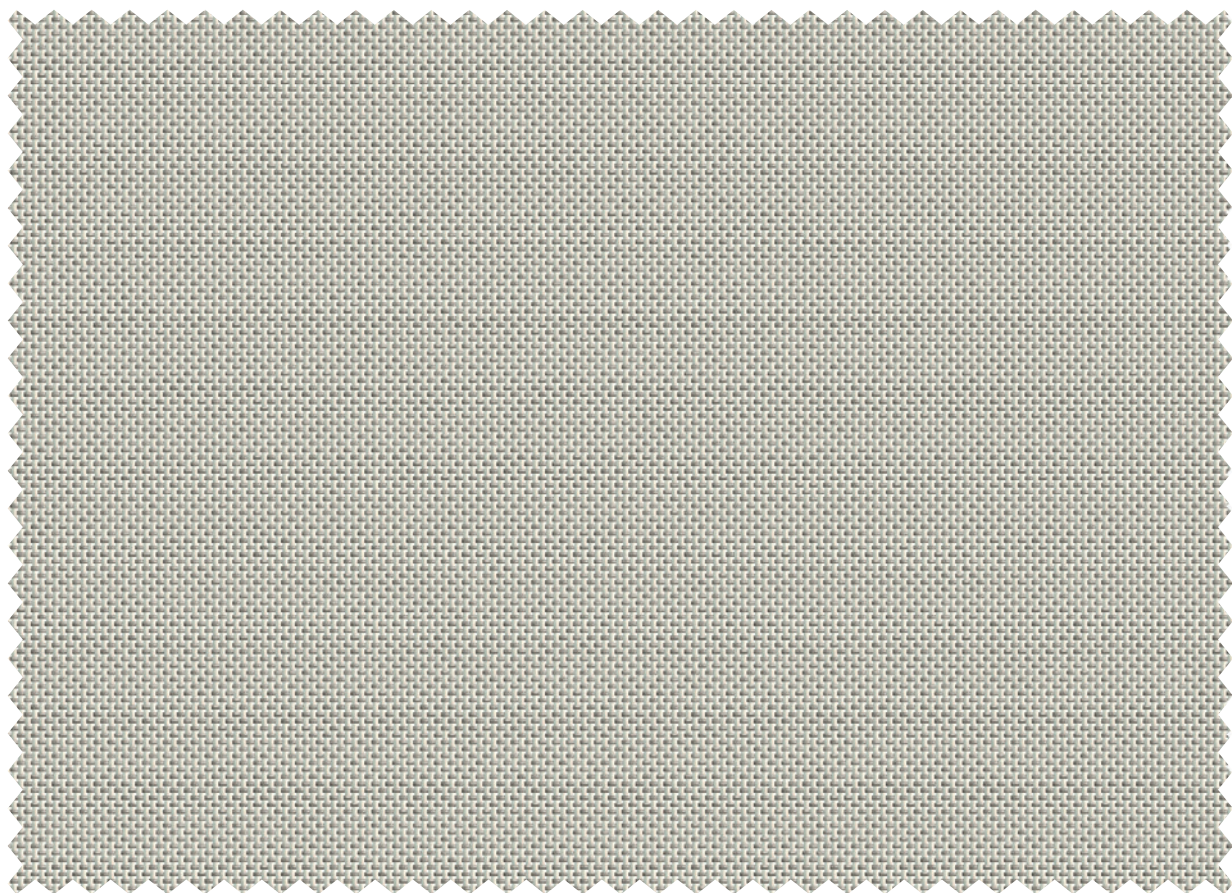
This fabric contains 28% of recycled content  
*Questo tessuto contiene il 28% di contenuto riciclato*





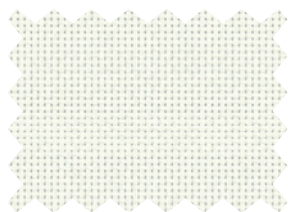
# Batyline Lounge

## Lounge



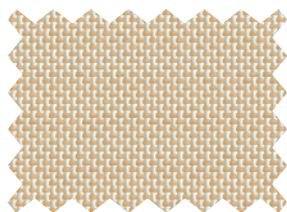
Quartz  
Quarzo

7220FR-50932\*



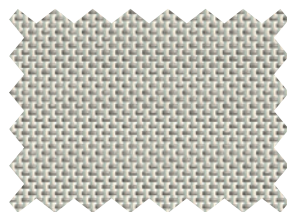
White  
Bianco

7720FR-5701\*



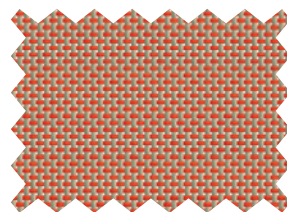
Shea  
Karité

7720FR-50931\*



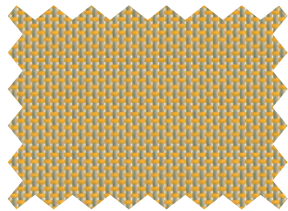
Quartz  
Quarzo

7720FR-50932\*



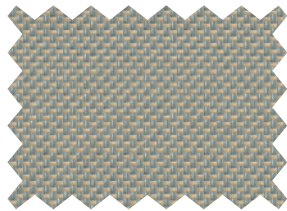
Cheyenne  
Cheyenne

7720FR-50928



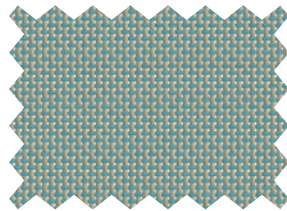
Safran  
Zafferano

7720FR-50929



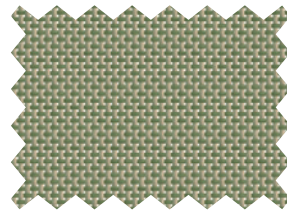
Zinc  
Zinco

7720FR-5703



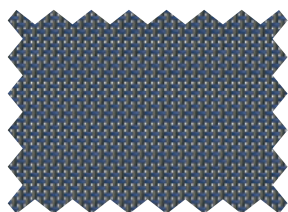
Sea spray  
Salvia

7720FR-50934



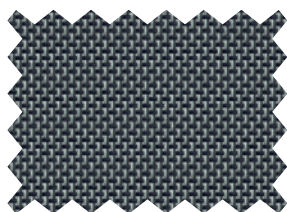
Reed  
Canna

7720FR-50930



Abyss  
Abisso

7720FR-50935



Dark aluminum  
Alluminio scuro

7720FR-5706\*

More colours available on demand  
Altri colori disponibili su richiesta

\*These colours are also available in 7721WP Waterproof version  
\*Questi colori sono disponibili anche nella versione impermeabile 7721WP.

# Batyline | Upholstery

<b>Batyline Eden</b> 7710	<b>Batyline Eden Waterproof</b> 7711WP	<b>Batyline Elios</b> 7740	<b>Batyline Elios Waterproof</b> 7741WP	<b>Batyline Iso (recycled)*</b> 7407	<b>Batyline Lounge</b> 7720FR	<b>Batyline Lounge Waterproof</b> 7721WP
------------------------------	---	-------------------------------	--	---	----------------------------------	---

**Standards  
Norme**

## Technical properties - Proprietà tecniche

Weight Peso	460 g/m <sup>2</sup> 13.3 oz/sq. yd	560 g/m <sup>2</sup> 16.5 oz/sq. yd	440 g/m <sup>2</sup> 13.0 oz/sq. yd	540 g/m <sup>2</sup> 15.9 oz/sq. yd	490g/m <sup>2</sup> 14.5 oz/sq. yd	500 g/m <sup>2</sup> 14.7 oz/sq. yd	590 g/m <sup>2</sup> 17.4 oz/sq. yd	EN ISO 2286-2
Width - Altezza	180 cm • 70.9 in		140 cm • 55.1 in		180 cm • 70.9 in	140 cm • 55.1 in		
Openess factor Coefficiente di apertura	-				22%	-		EN 410

## Physical properties - Proprietà fisiche

Tensile strength (warp/weft) Resistenza alla trazione (ordito/trama)	≥240/≥150 daN/5 cm ≥540/≥337 lbs/2 in	≥160/≥100 daN/5 cm ≥320/≥225 lbs/2 in	≥240/≥240 daN/5 cm ≥540/≥540 lbs/2 in	≥150/≥150 daN/5 cm ≥337/≥337 lbs/2 in	EN ISO 1421
Tear strength (warp/weft) Resistenza allo strappo (ordito/trama)	40/30 daN 90/67 lbs	22/15 daN 49/34 lbs	-	18/15 daN 40/34 lbs	DIN 53.363
Abrasion resistance Resistenza all'abrasione	50,000 cycles 50 000 cicli			>120,000 cycles >120 000 cicli	EN ISO 12947-2 Martindale
	>400,000 double rubs >400 000 doppio sfregamento		>600,000 double rubs >600 000 doppio sfregamento		ASTM D4157 Wyzenbeek
Mold resistance Resistenza alle muffe	Methods A, Excellent - Method A, Eccellente				EN ISO 846-A
Extreme working temperatures Temperature di lavoro estreme	-30°C / +70°C -22°F / +158°F	-10°C / +70°C -14°F / +158°F		-30°C / +70°C -22°F / +158°F	
Weather resistance Resistenza alle intemperie	GS = 4>4/5 for 700 h GS = 4>4/5 per 700 h				ASTMG154: UVA340

## Flame retardancy - Reazione al fuoco

Rating Classificazione	-	-	Pass Conforme	Pass Conforme	-	Pass Conforme	-	IMO MSC.307(88) (2010FTP Code) Annex 1 Part 8
---------------------------	---	---	------------------	------------------	---	------------------	---	---

## Management systems - Sistema di gestione

Quality - Qualità: ISO 9001 • Environment - Ambiente: ISO 14001 • Energy - Energia: ISO 50001

## Certifications, labels, warranty - Certificazioni, norme, garanzie

5-year warranty  
5 anni di garanzia



2690/22  
\* For - Per 7740,  
7741WP & 7720FR



STANDARD 100  
CQ 69314 IFTH  
www.oeko-tex.com  
\* For - Per 7710, 7711WP



STANDARD 100  
CQ 69318 IFTH  
www.oeko-tex.com  
\* For - Per 7407



<sup>1</sup> Summarizes the group's CSR project focused on human, to align economic performance and positive impact.

<sup>1</sup> Riassume il progetto di CSR del gruppo incentrato sulle persone, per allineare i risultati economici e l'impatto positivo.

A customisation service is available under certain conditions, please contact your local sales representative for more information.

Quoted technical characteristics are average values with a +/- 5% tolerance (\*Batyline ISO recycled +/-10% tolerance).

Our products are subject to improvements resulting from technical developments and we reserve the right to modify their characteristics at any time.

The purchaser of our products is responsible for checking the above data. A maintenance and spot cleaning guide is available on request.

A determinate condizioni è disponibile un servizio di personalizzazione; per ulteriori informazioni, contattare il rappresentante di zona.

Le caratteristiche tecniche indicate sono valori medi con una tolleranza del +/-5% (\*Batyline ISO riciclata con tolleranza del +/-10%).

I nostri prodotti sono soggetti a miglioramenti derivanti da sviluppi tecnici e ci riserviamo il diritto di modificarne le caratteristiche in qualsiasi momento.

L'acquirente dei nostri prodotti è responsabile della verifica dei dati sopra riportati. Su richiesta è disponibile una guida alla manutenzione e alla pulizia.

**Serge Ferrari**  
group

**Rancati**  
TESSUTI E ACCESSORI  
PER LA NAUTICA

sergeferrargroup.com

Batyline is a Serge Ferrari SAS registered trademark.  
Batyline è un marchio registrato di Serge Ferrari sas  
Ref. CT-02360 • 03/2024 • 11€

EN-IT

Photo credits - Crediti foto: ©Stéphane Rambaud, ©Marie Allain,  
©Serge Ferrari, ©Marinewerk DI F. Isopo & C. SAS,  
©Clément Caudal, ©Laurent Pischutt, ©