

# Batyline



[Stam]Skin

Marine  
collection

Collezione  
nautica



# Batyline | Marine Collection



## [Stam]Skin Top & Club

**Easy:** high flexibility of the material for a perfect upholstery quality

**Easy:** *elevata flessibilità del materiale per una perfetta qualità di rivestimento*

**Colourful:** a large palette of 33 neutral and vibrant colours

**Colorato:** *un'ampia palette di 33 colori neutri e vibranti*

**Elegant:** a classic leather grain for a timeless chic design

**Elegante:** *una pelle dalla grana classica per un design chic e senza tempo*



## [Stam]Skin Feel

**Natural:** contains 47% of biosourced material for a sustainable choice

**Naturale:** *contiene il 47% di materiale di origine biologica per una scelta sostenibile*

**Unique:** offers both an ultra-soft surface and a palette of sophisticated and timeless colors

**Unico:** *offre una superficie ultra-morbida e una palette di colori sofisticati e senza tempo*

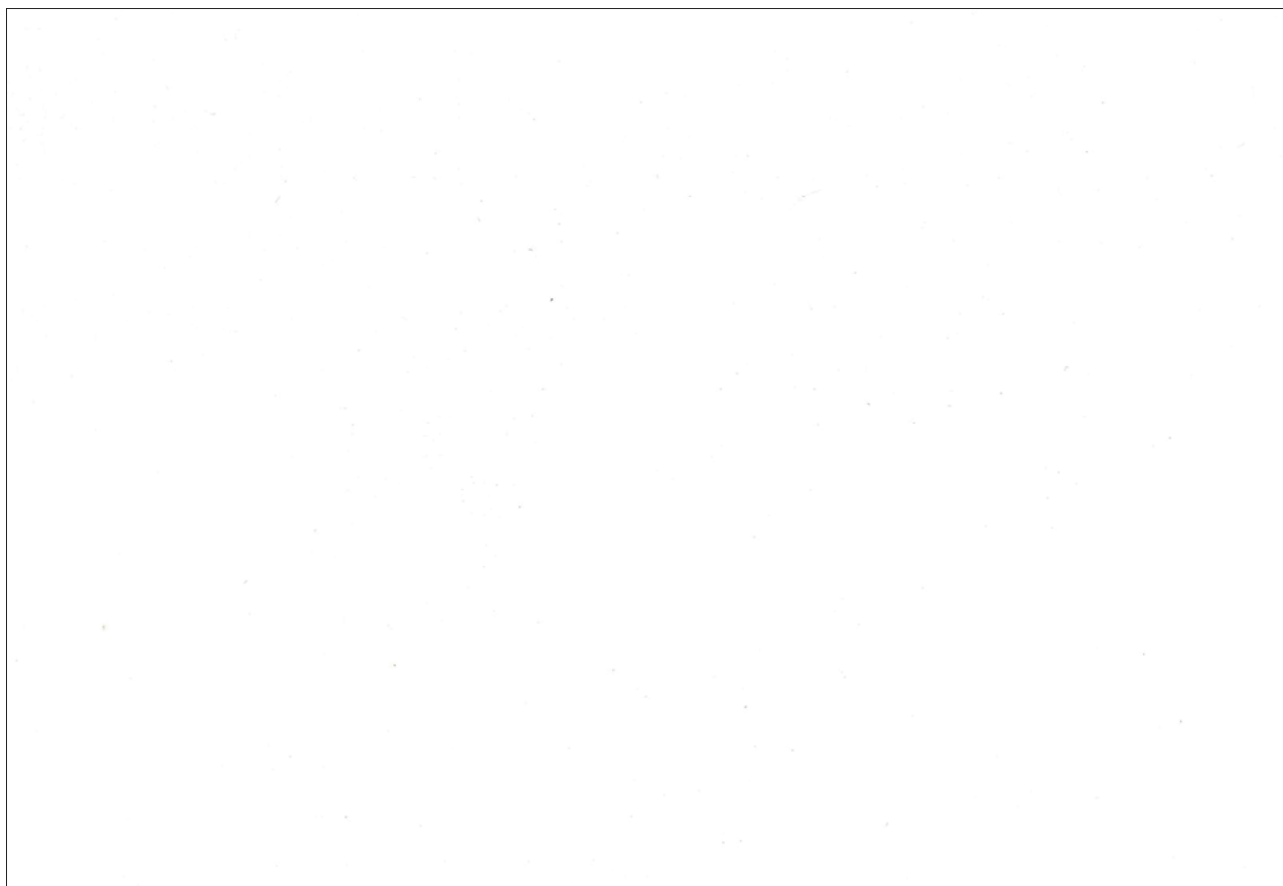
**Versatile:** suitable for indoor applications as well as outdoor applications

Complies with current fire resistance standards

**Versatile:** *adatto sia per applicazioni interne che per applicazioni esterne*  
*Conforme agli standard di resistenza al fuoco*

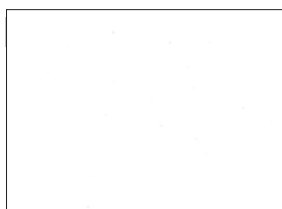
# Batyline [Stam]Skin

Top



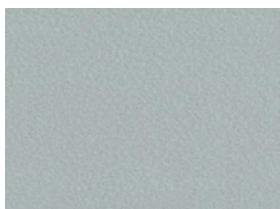
Marble  
*Marmo*

F4340-10120



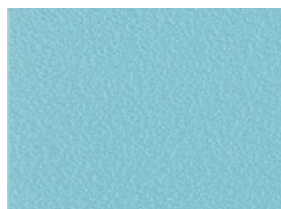
Marble  
*Marmo*

F4340-10120



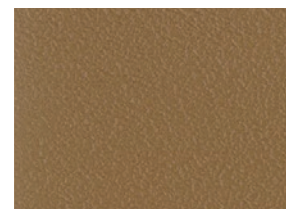
Mist  
*Nebbia*

F4340-20161



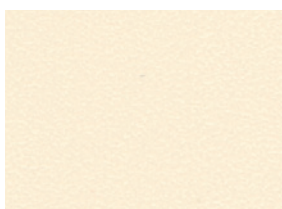
Baltic  
*Baltico*

F4340-20290\*



Alezan  
*Castagna*

F4340-20286



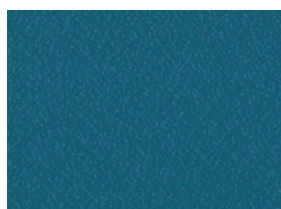
Sand  
*Sabbia*

F4340-5029



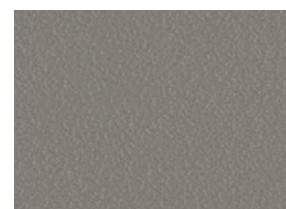
Turquoise  
*Turchese*

F4340-20294



Oslo  
*Blu oslo*

F4340-20289



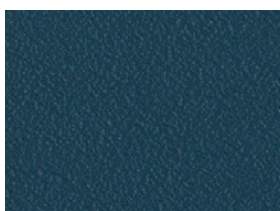
Taupe  
*Talpa*

F4340-20237



Capri  
*Capri*

F4340-20288



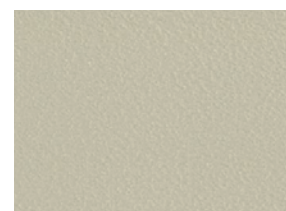
Adriatic  
*Blu Adriatico*

F4340-20284



Golden  
*Oro*

F4340-20281



Sahara  
*Sahara*

F4340-20279

More colours available on demand - *Altri colori disponibili su richiesta*

\*Colour available on request - *Colore disponibile su richiesta*

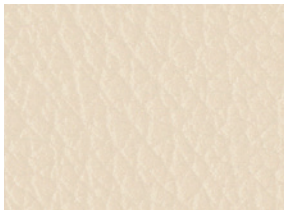
# Batyline [Stam]Skin

## Club



Taupe  
*Talpa*

F4340-20237P



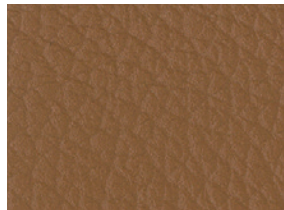
Sand  
*Sabbia*

F4340-5029P



Sahara  
*Sahara*

F4340-20279P



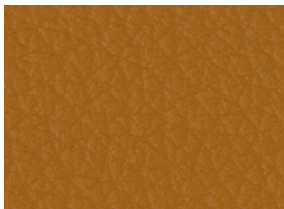
Alezan  
*Castagna*

F4340-20286P



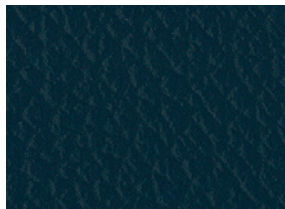
Taupe  
*Talpa*

F4340-20237P



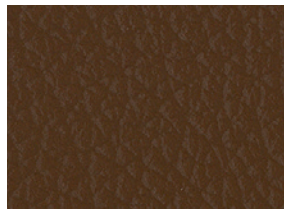
Golden  
*Oro*

F4340-20281P\*



Adriatic  
*Blu Adriatico*

F4340-20284P



Brandy  
*Brandy*

F4340-20278P



Black  
*Nero*

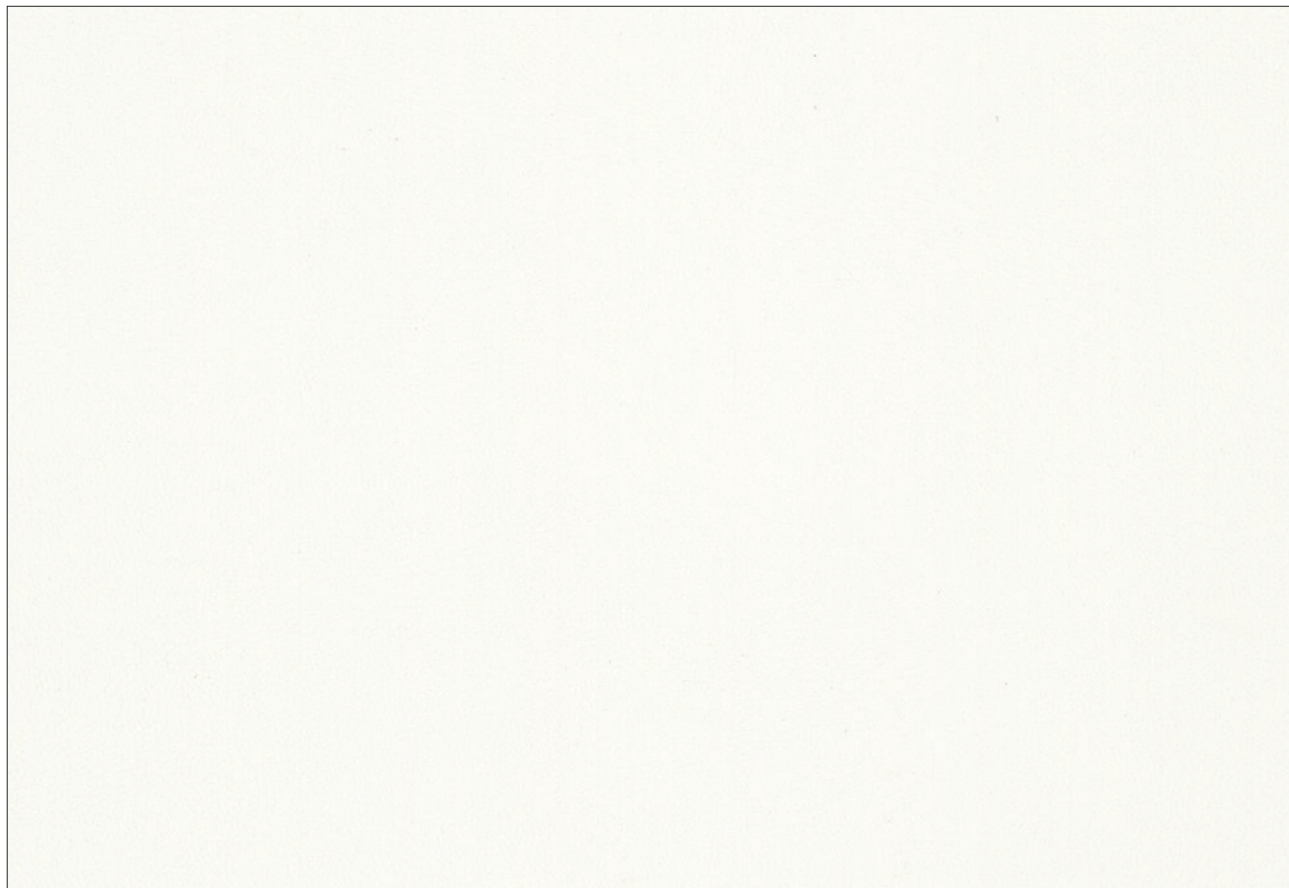
F4340-00002P

All colours available in F4340 Top - *Tutti i colori sono disponibili in F4340 Top*  
More colours available on demand - *Altri colori disponibili su richiesta*

\*Colour available on request - *Colore disponibile su richiesta*

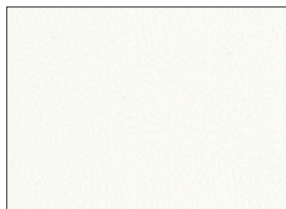
# Batyline [Stam]Skin

## Feel



Marble  
*Marmo*

**F4357-10120**



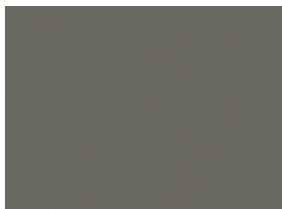
Marble  
*Marmo*

**F4357-10120**



Linen  
*Lino*

**F4357-20354**



Latte  
*Latte*

**F4357-20355**



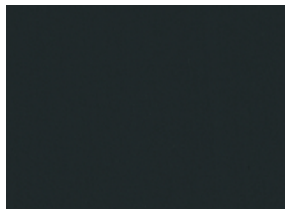
Fog  
*Nebbia*

**F4357-20161**



Slate  
*Ardesia*

**F4357-20232**



Black  
*Nero*

**F4357-00002**



Riviera blue  
*Blu Riviera*

**F4357-20239**



Oslo  
*Blu Oslo*

**F4357-20289**



Adriatic  
*Blu Adriatico*

**F4357-20284**



Brandy  
*Brandy*

**F4357-20278**



Chocolate  
*Cioccolato*

**F4357-20129**



Alezan  
*Castagna*

**F4357-20286**

More colours available on demand - *Altri colori disponibili su richiesta*

# Batyline | Marine Collection

<b>Batyline [Stam]Skin Top F4340</b>	<b>Batyline [Stam] Skin Club F4340</b>	<b>Batyline [Stam]Skin Feel* F4357</b>
--	--	--

## Technical properties - Proprietà tecniche

## Standards - Norme

Composition Composizione	Multi-layer composite - <i>Composito multistrato</i>		
	-	Biosourced content = 47% Contenuto di origine biologica = 47%	
Base cloth - <i>Tessuto di base</i>	Polyamide-jersey - <i>Maglia in poliammide</i>	Cotton jersey - <i>Maglia di cotone</i>	
Width - <i>Altezza dei rotoli</i>	140 cm • 55.1 in		
Weight - <i>Peso</i>	780 g/m <sup>2</sup> • 23 oz/sq. yd	885 g/m <sup>2</sup> • 21 oz/sq. yd	EN ISO 2286-2
Thickness - <i>Spessore</i>	1.0 mm – 1.2 mm • 1,000 microns - 1,200 microns	1.3 mm • 1,300 microns	EN ISO 5084

## Physical properties - Proprietà fisiche

Elongation under load 125 N/5 cm (warp/weft) <i>Allungamento sotto carico 20 daN (ordito/trama)</i>	>35% / >55%	>38% / >53%	EN ISO 1421
Tensile strength (warp/weft) <i>Resistenza alla rottura (ordito/trama)</i>	>440 N/5 cm / >280 N/5 cm 96.9/62.9 lbs/2 in	230 N/5 cm / 200 N/5 cm 51.7/45 lbs/2 in	
Tear strength (warp/weft) <i>Resistenza allo strappo (ordito/trama)</i>	≥25 N / ≥15 N ≥6 lbs / ≥3 lbs		EN ISO 13937-1
Flexing resistance <i>Resistenza alla flessione</i>	400,000 cycles 400 000 cicli	-	EN ISO 7854
Abrasion resistance <i>Resistenza all'abrasione</i>	>120,000 cycles >120 000 cicli		EN ISO 5470-2 Martindale
Weather resistance <i>Resistenza agli agenti atmosferici</i>	GS=4/5 for 700 h GS=4/5 per 700 h	GS=4/5 for 1,000 h GS=4/5 per 1 000 h	ASTM G154
Mold resistance - <i>Resistenza alle muffe</i>	Degree 0, excellent - <i>Grado 0, eccellente</i>		EN ISO 846-A
Extreme working temperatures <i>Temperature estreme di utilizzo</i>	-20°C / +70°C • -4°F / +158°F	-30°C / +70°C • -22°F / +158°F	

## Flame retardancy - Resistenza al fuoco

Rating Classificazione	US	Pass - <i>Conforme</i>	NFPA 260	
		Class 1 - <i>Classe 1</i>	CAL TB 117	
	IT	-	Class 1IM - <i>Classe 1IM</i>	UNI 9175
		Class 2 - <i>Classe 2</i>	-	UNI 9177-87
	CH	5.3		SN 198898 - VKF/AEAI
	DE	Class F1 - <i>Classe F1</i>		DIN 53438-3
	FR	M2		NFP 92.507
	UK	Pass - <i>Conforme</i>		CRIB 5 BS 5852
		Group 2 - <i>Gruppo 2</i>		AS / NZS 1530-3
	AU	Pass - <i>Conforme</i>	-	AS / NZS 1530-3
	Group 2 - <i>Gruppo 2</i>	-	AS / NZS 3837	
	Cigarette / match test <i>Test sigaretta / fiammifero</i>	No fire <i>Nessuna ignizione</i>	EN 10211&2	
	Marine test <i>Test nautico</i>	Pass <i>Conforme</i>	IMO MSC.307(88) (2010FTP Code) Annex1 Part 8	

## Management system - Sistema di gestione

Quality - *Qualità*: ISO 9001 • Environment - *Ambiente*: ISO 14001

## Certifications, labels, warranties - Certificazioni, etichette, garanzie

5-year warranty  
5 anni di garanzia

Smart coating technology  
Tecnologia Smart coating



\*Only for F4357



2690/23



<sup>1</sup>Summarizes the group's CSR project focused on human, to align economic performance and positive impact.

<sup>1</sup>Riassume il progetto di CSR del gruppo incentrato sulle persone, per allineare i risultati economici e l'impatto positivo.

Quoted technical characteristics are average values with a +/- 5% tolerance (\*Batyline [Stam]Skin Feel +/- 10% tolerance). Our products are subject to improvements resulting from technical developments and we reserve the right to modify their characteristics at any time. The purchaser of our products is responsible for checking the above data. A maintenance and spot cleaning guide is available on request. *The colors and textures presented are for information only.*

*Le caratteristiche tecniche indicate sono valori medi con una tolleranza del +/- 5% (\*Batyline [Stam]Skin Feel +/- 10% tolleranza). I nostri prodotti sono soggetti a miglioramenti derivanti da sviluppi tecnici e ci riserviamo il diritto di modificare le loro caratteristiche in qualsiasi momento. L'acquirente dei nostri prodotti è responsabile della verifica dei dati sopra riportati. Una guida alla manutenzione e alla pulizia è disponibile su richiesta. I colori e le texture presentati sono inclusi solo a titolo informativo*

**Serge Ferrari**  
group

**Rancati**  
TESSUTI E ACCESSORI  
PER LA NAUTICA

sergeferrargroup.com