

NEW MISTRAL

NEW MINK

NEW RIO



Quarcati

TESSUTE E ACCESSORI
PER LA NAUTICA

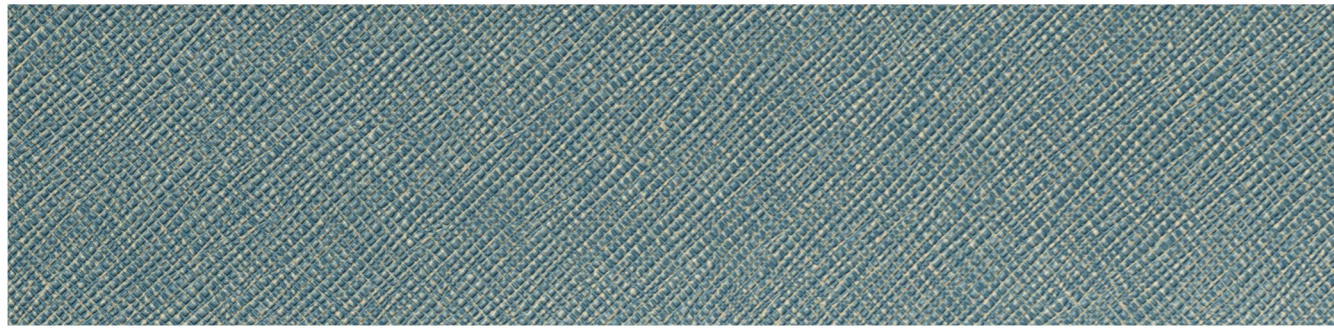
FINTE PELLI



M
MORBERN
EUROPE



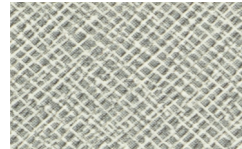
MISTRAL FREE **NEW**



MIS-103 Azure



MIS-117 Pelican White



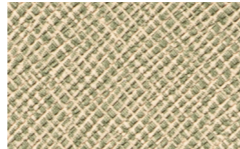
MIS-105 Brook



MIS-112 Ice



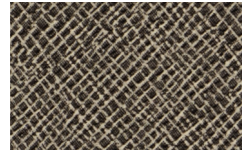
MIS-113 Ivory



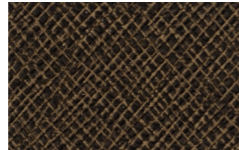
MIS-101 Abalone



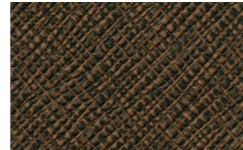
MIS-106 Burlap



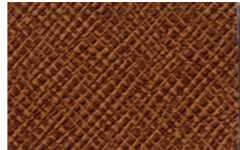
MIS-111 Harvest



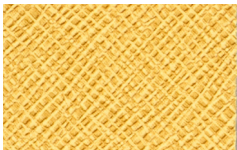
MIS-114 Kelp



MIS-116 Olive



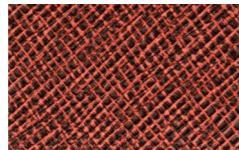
MIS-125 Walden



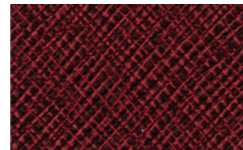
MIS-123 Sun Rays



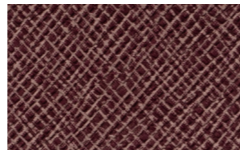
MIS-122 Spice



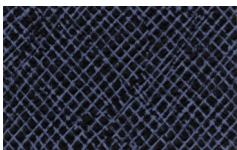
MIS-120 Salamander



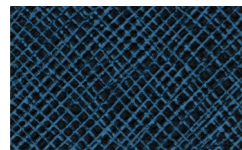
MIS-108 Cherry



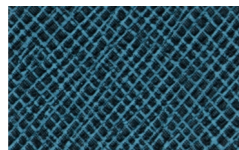
MIS-119 Roseate



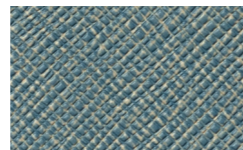
MIS-124 Violet



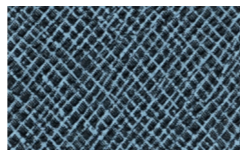
MIS-102 Anemone



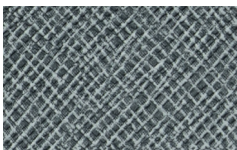
MIS-115 Kingfisher



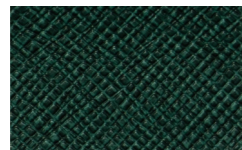
MIS-103 Azure



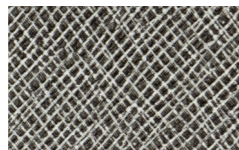
MIS-104 Blue Bird



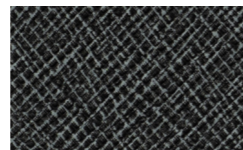
MIS-109 Dove



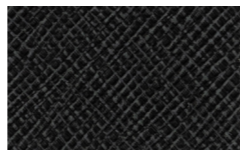
MIS-107 Cactus



MIS-121 Snowbound



MIS-110 Grizzly Grey

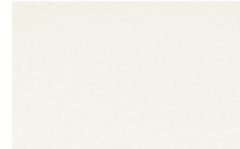


MIS-118 Raven

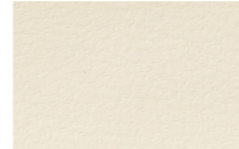
MINK **NEW**



MK-151 Champagne



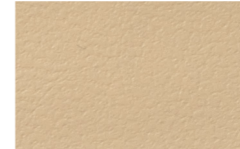
MK-150 White



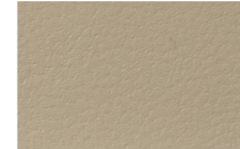
MK-155 Oyster



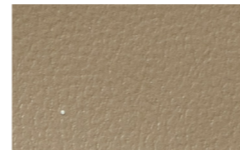
MK-151 Champagne



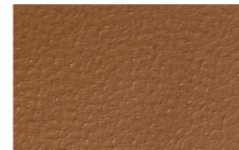
MK-158 Driftwood



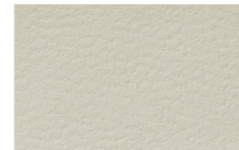
MK-153 Buckskin



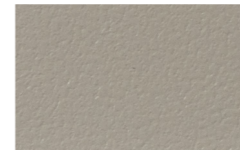
MK-154 Stone



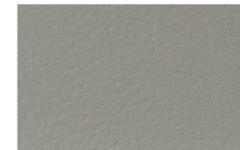
MK-160 Saddle



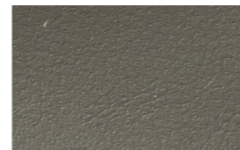
MK-156 Glacier



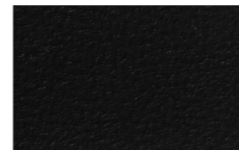
MK-152 Warm Grey



MK-161 Storm Grey

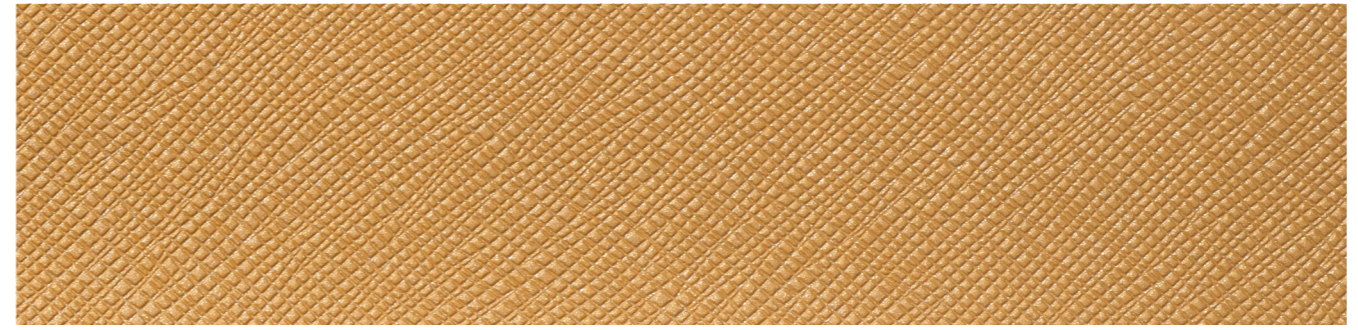


MK-159 Med Grey



MK-157 Black

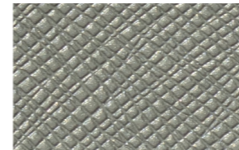
RIO **NEW**



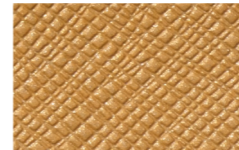
RIO-150 Gold



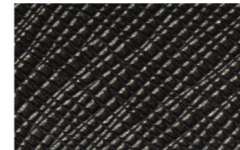
RIO-141 Pearl



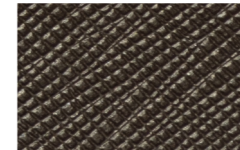
RIO-151 Silver



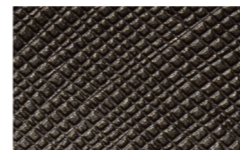
RIO-150 Gold



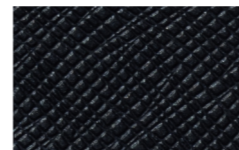
RIO-140 Lead



RIO-144 Mocha



RIO-147 Ash



RIO-146 Navy

SCHEMA TECNICA - Technical data sheet

	UNITÁ	NORMA	MISTRAL FREE	MINK	RIO		
Peso/Weight	g/m ²	UNI EN 2286-2:2001	678 ± 136	745 ± 70	745 ± 70		
Spessore/Thickness	mm	UNI EN 2286-3:2001	1,10 ± 0,1	1,00 ± 0,10	1,00 ± 0,10		
Altezza Rotoli/Width	cm	UNI EN 2286-1:2001	137	137	137		
Aderenza Spalmatura Adhesion of Coating	Newton 25,4mm	ASTM D571	W. 13 minimo F. 13 minimo	W. 13 minimo F. 13 minimo	W. 13 minimo F. 13 minimo		
Resistenza alla Muffa/Mildew Resistance		ASTM G21-96	Si	Si	Si		
Resistenza al Freddo Cold Track	°C	Fed Std 191A 5872 Pass	-32°	-32°	-32°		
Resistenza Trazione (metodo Martindale) Tensile Strength	Cicli	UNI EN ISO 12947-2:2000	300.000	300.000	300.000		
Solidità del colore alla luce artificiale Colour fastness to artificial light	Scala dei blu	ASTM G153; Cycle 1, 1000 hrs Min AATCC 4	7	7	7		
Resistenza al fuoco Fire Resistance			IMO Classe 1 IM	IMO MED Classe 1 IM	IMO MED Classe 1 IM		
Resistenza alla fiamma/Flame Resistance	BE EN 1021-1 and 2 US FMVSS 302 - UNI ISO 3795 CA TB 117-2013 (Section 1 - Cover Fabric) Sect E BIFMA Class A/NFPA 260A, UFAC Class 1						
Norme di Pulizia	Pulire con tessuto inumidito ed insaponato e sciaquare bene con acqua pulita. Non usare solventi, candeggine e detergenti chimici o spray per lucidare.						
ATTENZIONE	In generale i colori chiari delle fintepelli non possono essere messi a contatto con coloranti non fissati (es. jeans e derivati) onde evitare macchie o aloni che non si possono pulire. Questi valori sono dati a titolo indicativo ed in buona fede e non possono essere considerati in alcun modo vincolanti. L'impiego del prodotto deve essere valutato in base a ciò che si deve realizzare. non si risponde del suo utilizzo per impieghi impropri. Sono ammesse leggere differenze di colore tra lotti diversi.						



Rancati s.r.l.

Via Molo Giano - Molo Guardiano - 16128 Genova (GE)

tel. +39 010 246.77.81 - WhatsApp + 39 345 089.30.16

www.rancatinautica.com - info@rancatinautica.com

