

SUMMERTEX
WINTERTEX
PVC650
SUNSCREEN PLUS
BATYLINE ISO
SOLTIS 86
SUPERPOLY 500
POLYSTAR
POLYEXTRA 250
O'SEA
REGALITE
CRYSTAL

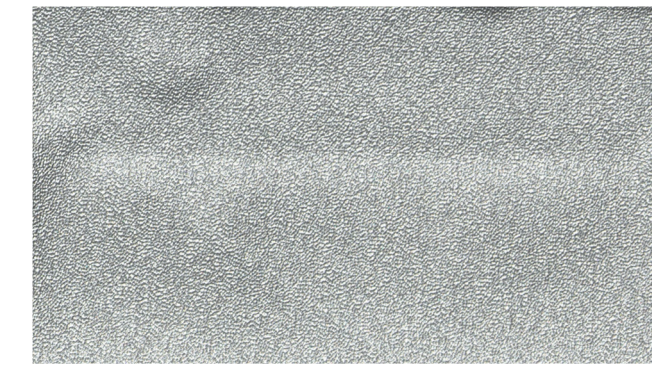


NEW COVER

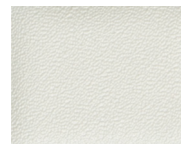
distributore esclusivo

SEATEXTILE[®]
by Rancati

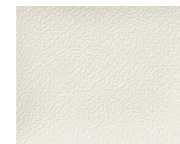
STEX - SUMMERTEX - h 260



S8124 - SILVER



S8044 - BIANCO



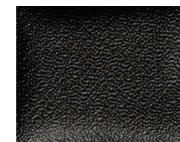
S8281 - AVORIO



S8897 - SABBIA



S8001 - GRIGIO



S8002 - NERO

SUNSCREEN PLUS Microban® h 180/220



PL06 - BIANCO - h 220



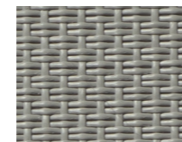
PL05 - SABBIA h 220



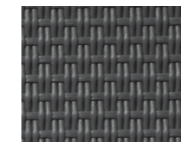
PL01 - NERO H 220



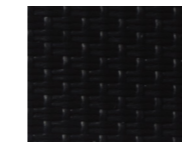
PL60 - AVORIO H 220



6060 - SILVER h 180



6565 - GRIGIO H 180



PL121 - NAVY H 180



SUPER POLY 500 - h 160



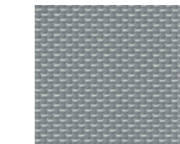
11 - BEIGE



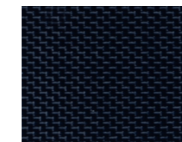
10 - BIANCO



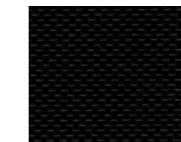
11 - BEIGE



12 - GRIGIO



16 - BLU

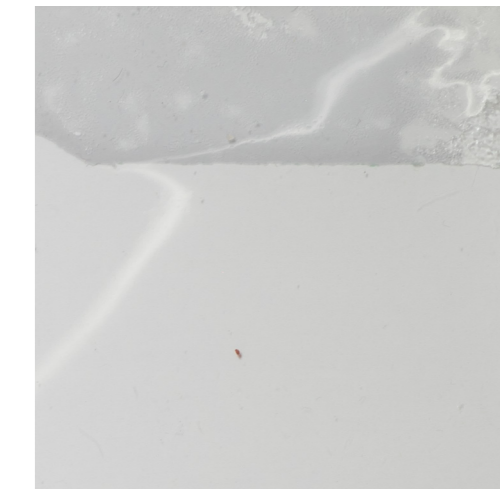


17 - NERO

O'SEA® - CONTINENTAL - cm 136X279



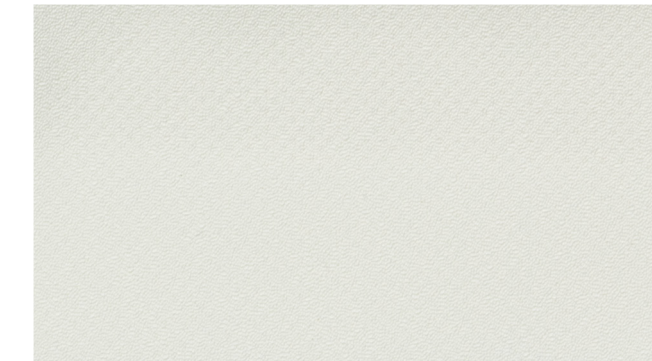
030 - mm 0,75



040 - mm 1



WTEX - WINTERTEX - h 260



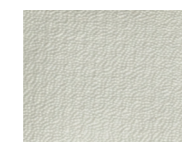
W8044 - BIANCO



W8897 - SABBIA

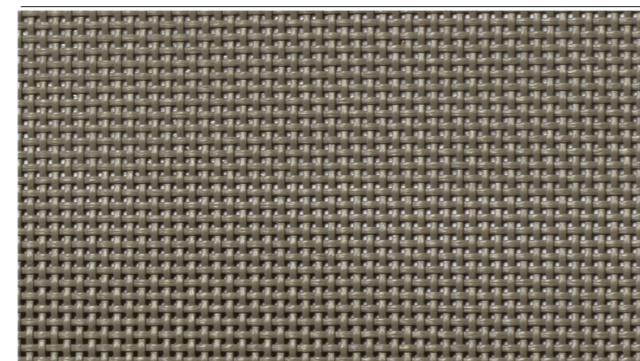


W8281 - AVORIO



W8001 - GRIGIO

BATYLINE ISO h 180



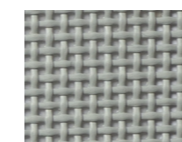
5014 - TAUPE



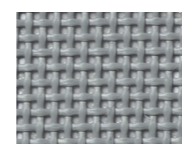
5001 - BIANCO



5378 - NOCCIOLA



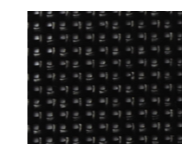
5374 - SILVER



5003 - GRIGIO



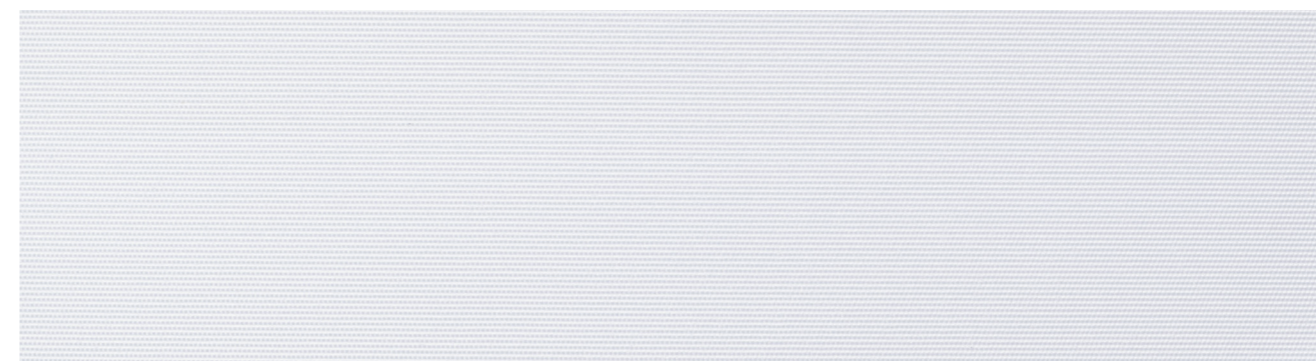
121 - NAVY



5005 - NERO



POLYSTAR - h 200



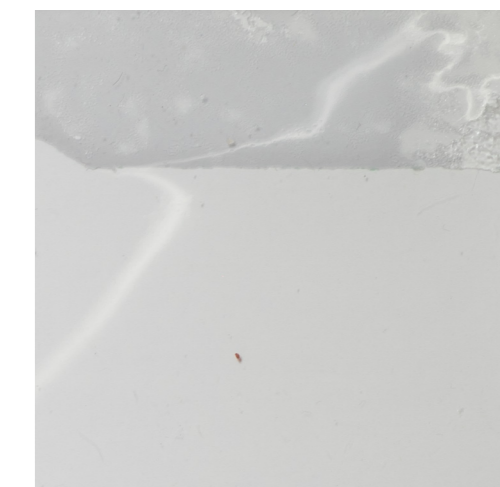
BIANCO



REGALITE® - CONTINENTAL - cm 136X279



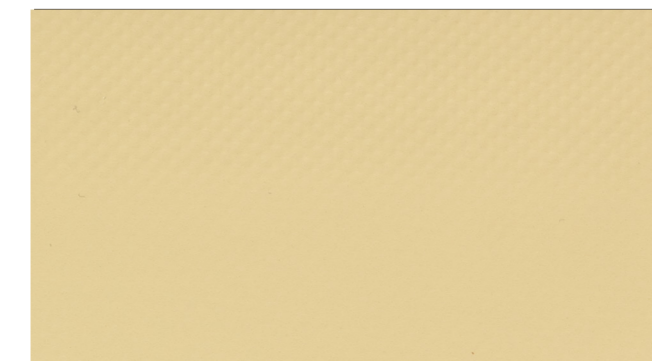
030 - mm 0,75



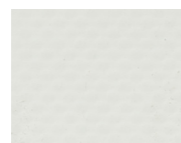
040 - mm 1



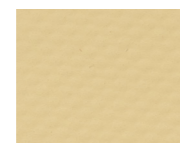
PVC 650 RS-ADR-IGNIFUGO - h 250



0066 - BEIGE



0065 - BIANCO



0066 - BEIGE



0069 GRIGIO

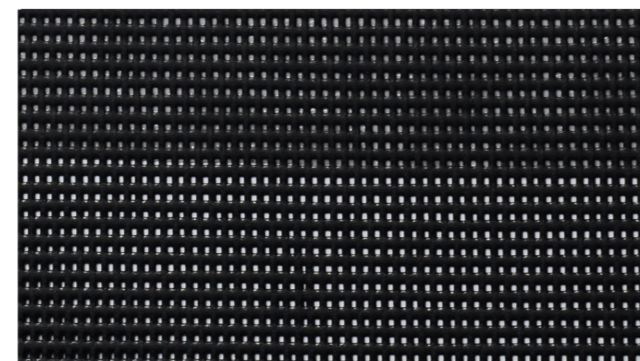


0067 - BLU



0068 - NERO

SOLTIS 86 - h 177/267



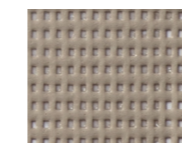
2047 - ANTRACITE



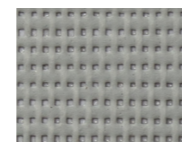
2044 - BIANCO



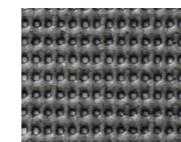
2175 - CHAMPAGNE



2135 - SABBIA



2171 - GRIGIOPIETRA



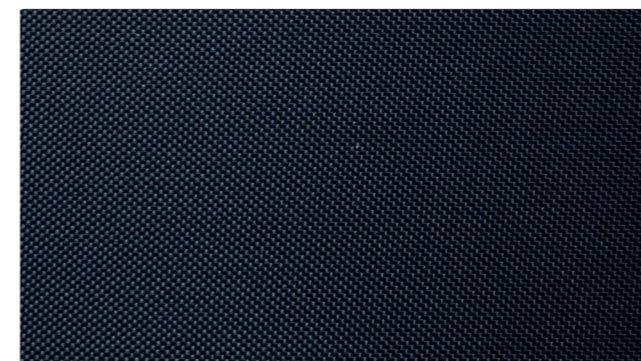
2045 - METALLO



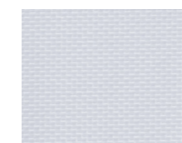
2053 - NERO



POLY EXTRA 250 - h 160



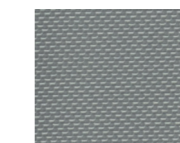
26 - BLU



20 - BIANCO



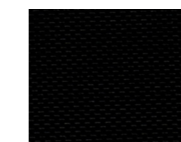
21 - BEIGE



22 - GRIGIO



26 - BLU



27 - NERO

CRYSTAL ACHILLES® cm 137



5/10" - mm 0,5



7,5/10" - mm 0,75



10/10" - mm 1



SCHEDA TECNICA - *Technical data sheet*

PROPRIETÀ	SUMMERTEX	WINTERTEX	PVC 650	SUNSCREEN PLUS	BATYLINE ISO	SOLTIS 86	SUPER POLY 500	POLYSTAR	POLY EXTRA 250
Composizione <i>Composition</i>	PL 280 dtex spalmato PVC	PL 1100 dtex spalmato PVC	PL 1100 dtex spalmato PVC	Poliestere spalmato vinile	Poliestere spalmato PVC	Poliestere spalmato PVC	80% PL-20%PU 500/500	80% PL-20%PU 500/500	90% PES-10%PU 70/70
Peso (gr./m ²) <i>Weight</i>	280	440	650	651	500	380	240	280	65
Altezza (cm) <i>Width</i>	260	260	250	180/220	180	177/267	160	200	150
Resistenza alla trazione ordito/trama (Kg. DaN 5 cm) <i>Tensile strength warp/weft (Kg. DaN 5 cm)</i>	142/120	290/260	200/200	215/145	240/240	230/160	160/110	160/110	75/45
Resistenza allo strappo ordito/trama (kg) <i>Tear strength warp/weft (Kg. DaN 5 cm)</i>	12/10	35/30	20/20	37/25	50/50	45/20	-	-	40/30
Stabilità alla luce <i>Color fastness</i>	7+	7+	7+	-	4+	-	5	5	2+
Resistenza alle muffe <i>Mildew Resistance</i>	grado 0 eccellente	grado 0 eccellente	grado 0 eccellente	grado 0 eccellente	grado 0 eccellente	grado 0 eccellente	-	-	-
Colonna d'acqua (mm) <i>Water Column</i>	1000	1000	1000	-	-	-	700/900	700/900	-
Temperatura d'utilizzo <i>Temperature of use</i>	-30° / +70°	-30° / +70°	-30° / +70°	-30° / +70°	-30° / +70°	-30° / +70°	-	-	-
Classe ignifuga <i>Flame Retardancy Class</i>	-	-	CL2	-	-	M1	M1	-	-
Lunghezza rotoli (ml) <i>Roll Length</i>	40	30	60	30	50	50	100	50	100
Garanzia (anni) <i>Warrenty (years)</i>	2	2	-	2	2	5	-	-	-

Le caratteristiche tecniche menzionate rappresentano valori medi con tolleranza di +/- 5%.

The mentioned technical characteristics represent the average values with ± 5% tolerance.

	O'SEA®	REGALITE®	CRYSTAL ACHILLES®	
Composizione <i>Composition</i>	Foglio di vinile spalmato <i>Coated vinyl sheet</i>	Foglio di vinile spalmato <i>Coated vinyl sheet</i>	Composizione <i>Composition</i>	PVC/Vinile
Dimensione del foglio <i>Sheet dimensions</i>	cm 136 x 279	cm 136 x 279	Altezza rotolo <i>Width of the roll</i>	137 cm
Peso <i>Weight</i>	950 g ± 15 g	1350 g ± 20 g	Spessore <i>Thickness</i>	5/10" 0,50 mm 7,5/10" 0,75 mm 10/10" 1,00 mm
Spessore <i>Thickness</i>	030 - mm 0,75 040 - mm 1	030 - mm 0,75 040 - mm 1	Lunghezza rotoli <i>Roll length</i>	5/10" 50 ml 7,5/10" 30 ml 10/10" 20 ml
Allungamento a rottura <i>Breaking elongation</i>	155%	170%	Resistenza alla trazione N/CM <i>Tensile strength N/CM</i>	5/10" 140/137 7,5/10" 180/152 10/10" 227/204
Trasmissione luminosa <i>Brightness transmission</i>	90%	88%	Allungamento % <i>Elongation %</i>	5/10" 329/350 7,5/10" 335/350 10/10" 351/354
Distorsione ottica (nebbia) <i>Optical distortion (fog)</i>	0,5 - 1,0%	0,5 - 1,0%	Resistenza allo strappo <i>Tear strength</i>	5/10" 41/40 7,5/10" 54/53 10/10" 70/65
Temperatura limite di elasticità <i>Temperature flexibility limit</i>	-23°C	-23°C	Resistenza al freddo <i>Cold crack resistance</i>	-20°C
			Trasmissione raggi UV-A/UV-B % <i>UV-A/UV-B rays transmission %</i>	5/10" 21/0,2 7,5/10" 13/0,2 10/10" 11/0,2